



THE  
**WEDDING SCHOOL**





ONE WEDDING, AND ONLY ONE WEDDING

---

**START TO FINISH**

# WEDDING DETAILS

---

- ▶ In Philadelphia, at Hotel Monaco, a church, and the Downtown Club
- ▶ I wanted to find an average wedding with good people and no crazy budget
- ▶ It's hard to see reality in unreal weddings
- ▶ It was November, so it got dark early
- ▶ We had a break in between ceremony and reception





# BY THE NUMBERS

---

- ▶ Ten hours of coverage
- ▶ 2313 RAW files
- ▶ One photographer, one assistant
- ▶ 732 final jpegs
- ▶ One hour to cull
- ▶ Sidecar Post edited
- ▶ One hour to blog/social media
- ▶ One hour post edit/pre-delivery

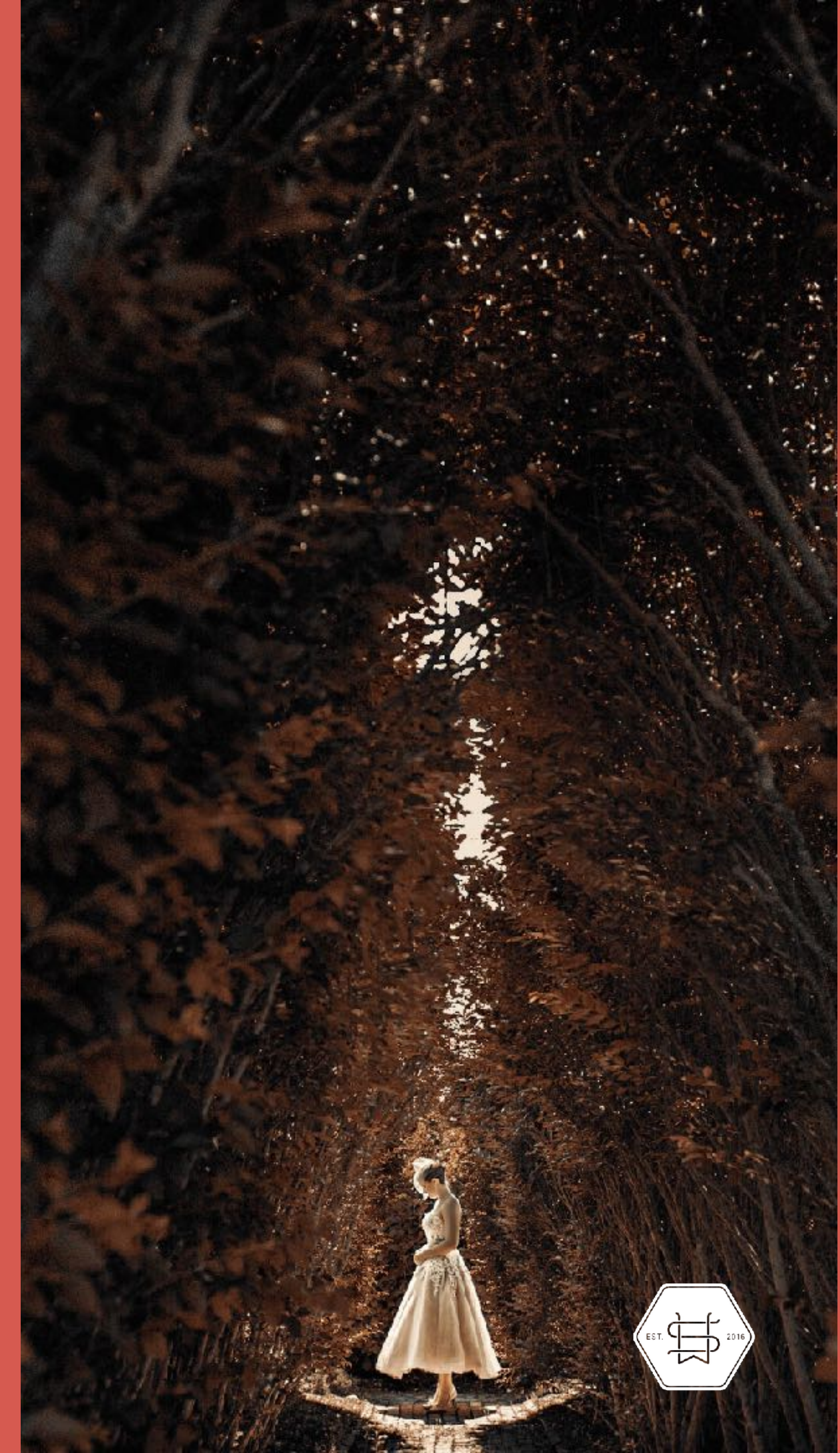




# DETAILS TO REMEMBER

---

- ▶ Prep lenses : 24-70mm, 85mm f/1.4
- ▶ Ceremony lenses : 70-200mm f.2.8, 24-70mm
- ▶ Portrait lenses: 24-70mm, 70-200mm f/4
- ▶ Small details : 105mm macro
- ▶ Reception lenses : 24-70mm, 70-200mm, 28mm
- ▶ Flash power for family formals : FULL
- ▶ Flash power for reception : 1/4







14 MINUTES

---

# GROOM PREP





1/160...f/2...ISO 640... 85.0 mm f/1.4...85 mm...Aperture priority... 1/3 EV





1/160...f/2.8...ISO 1600... 24.0-70.0 mm... mm... Aperture priority... 0 EV





1/160...f/2...ISO 1250... 85.0 mm f/1.4...85 mm...Aperture priority... $\frac{1}{3}$  EV





1/160...f/2...ISO 720... 85.0 mm f/1.4...85 mm...Aperture priority...0 EV









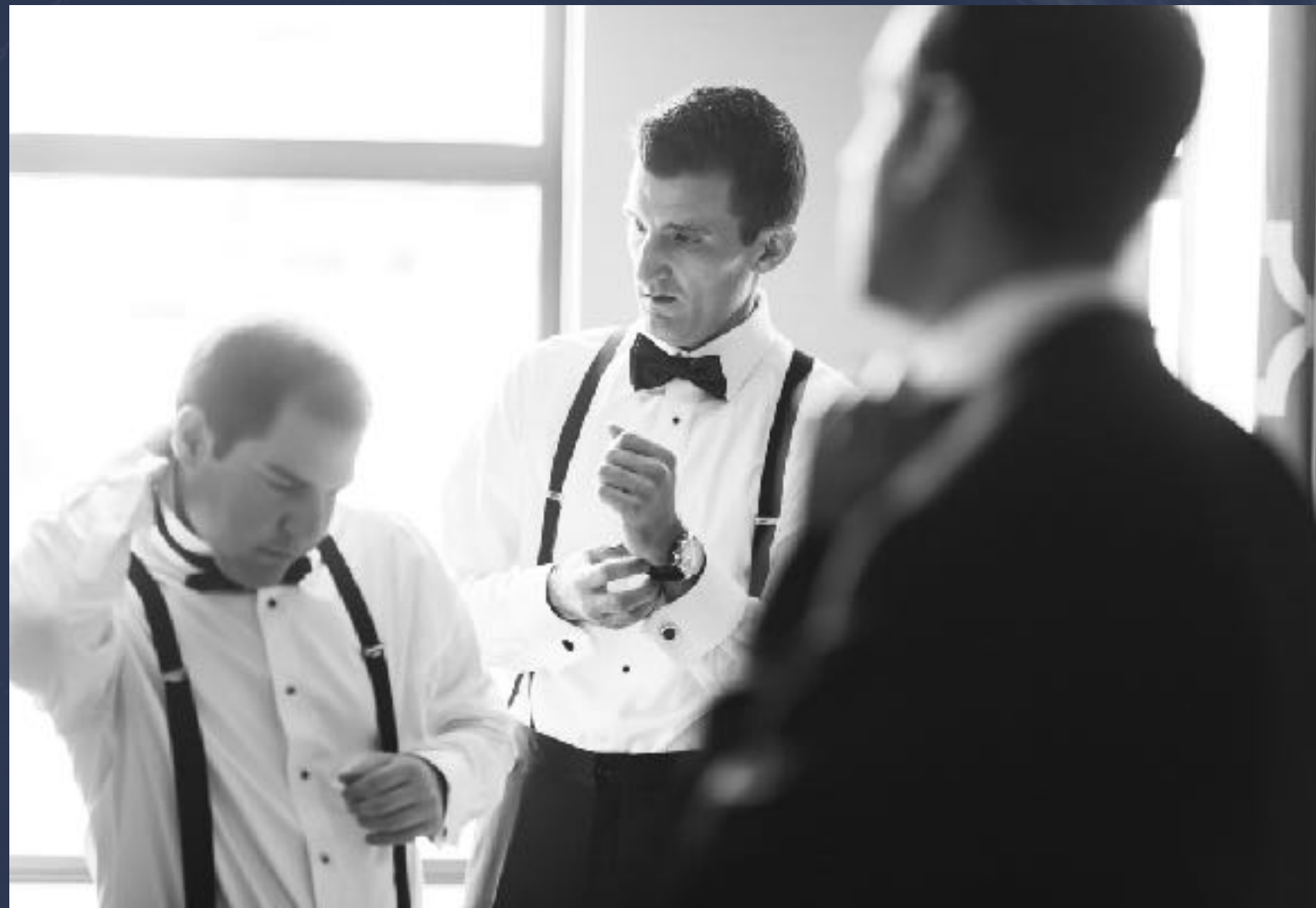
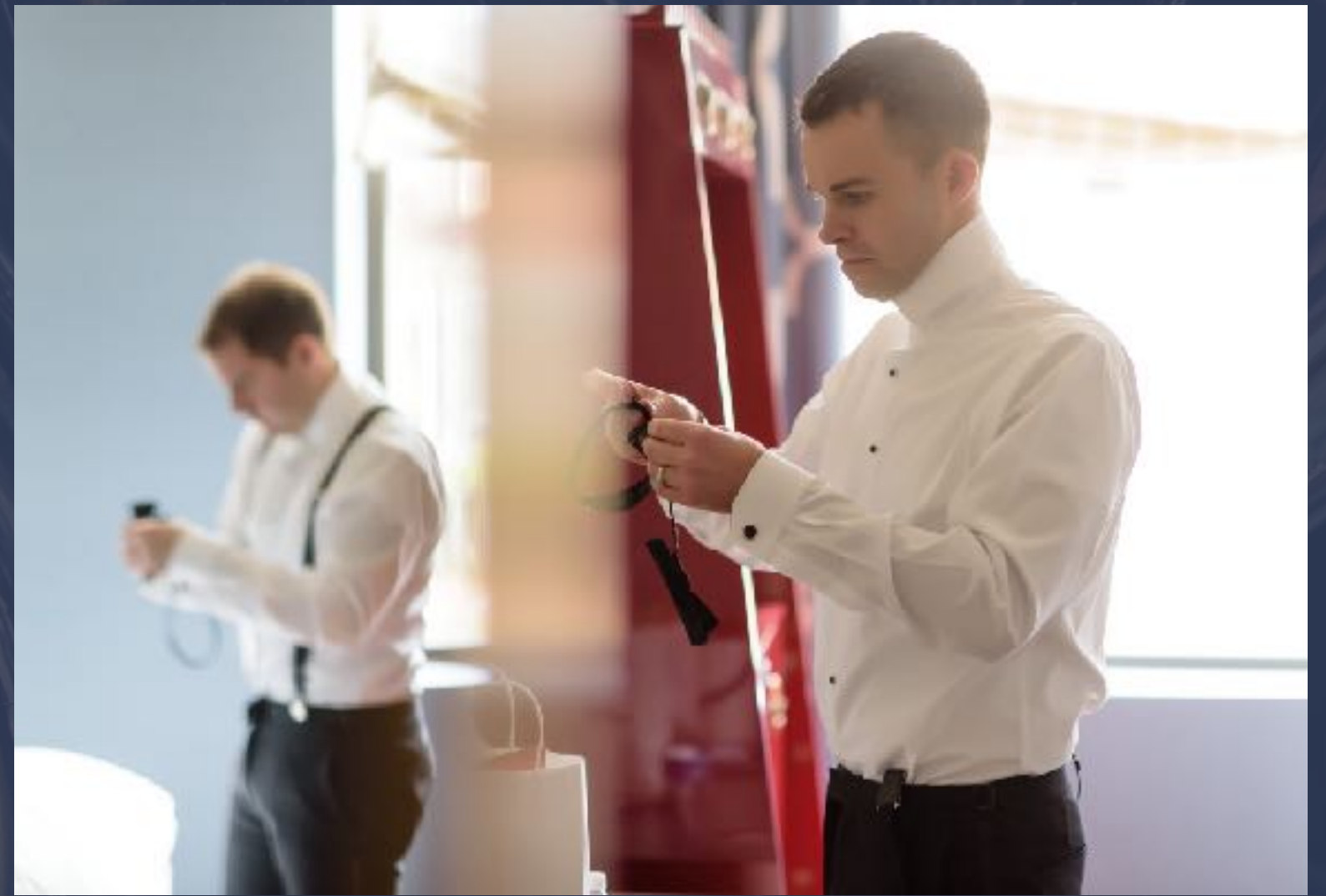
1/160...f/1.8...ISO 280... 85.0 mm f/1.4...85 mm...Aperture priority... $\frac{1}{3}$  EV





1/160...f/1.8 ISO 640... 85.0 mm f/1.4...85 mm...Aperture priority...- 1 EV









62 MINUTES

---

# DETAILS + BRIDAL PREP





1/160...f/9...ISO 1100... 105.0 mm f/2.8...105 mm...Aperture priority...- 2/3 EV





1/160...f/11...ISO 720... 105.0 mm f/2.8...105 mm...Aperture priority...- 1 2/3 EV





1/160...f/11...ISO 640... 105.0 mm f/2.8...105 mm...Aperture priority...– 1 2/3 EV





1/160...f/9...ISO 500... 105.0 mm f/2.8...105 mm...Aperture priority...– 2/3 EV









1/160...f/2.8...ISO 360... 24.0-70.0 mm f/2.8...28 mm...Aperture priority...- 1 2/3 EV









1/160...f/1.4...ISO 220... 85.0 mm f/1.4...85 mm...Aperture priority...- 2/3 EV









1/160...f/2.2...ISO 1600... 85.0 mm f/1.4...85 mm...Aperture priority...- 1/3 EV



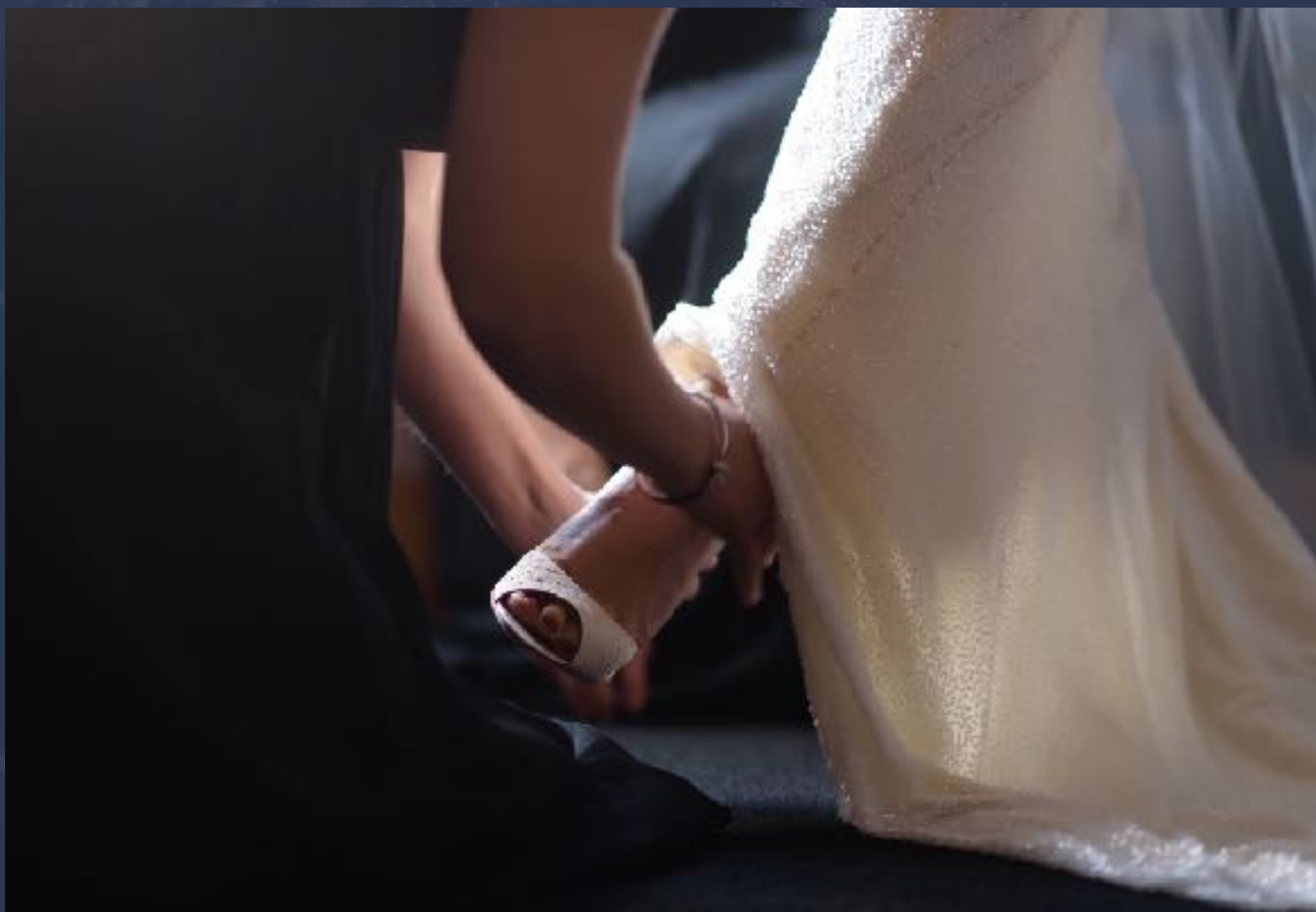






1/160...f/1.8...ISO 200... 85.0 mm f/1.4...85 mm...Aperture priority...- 1 EV







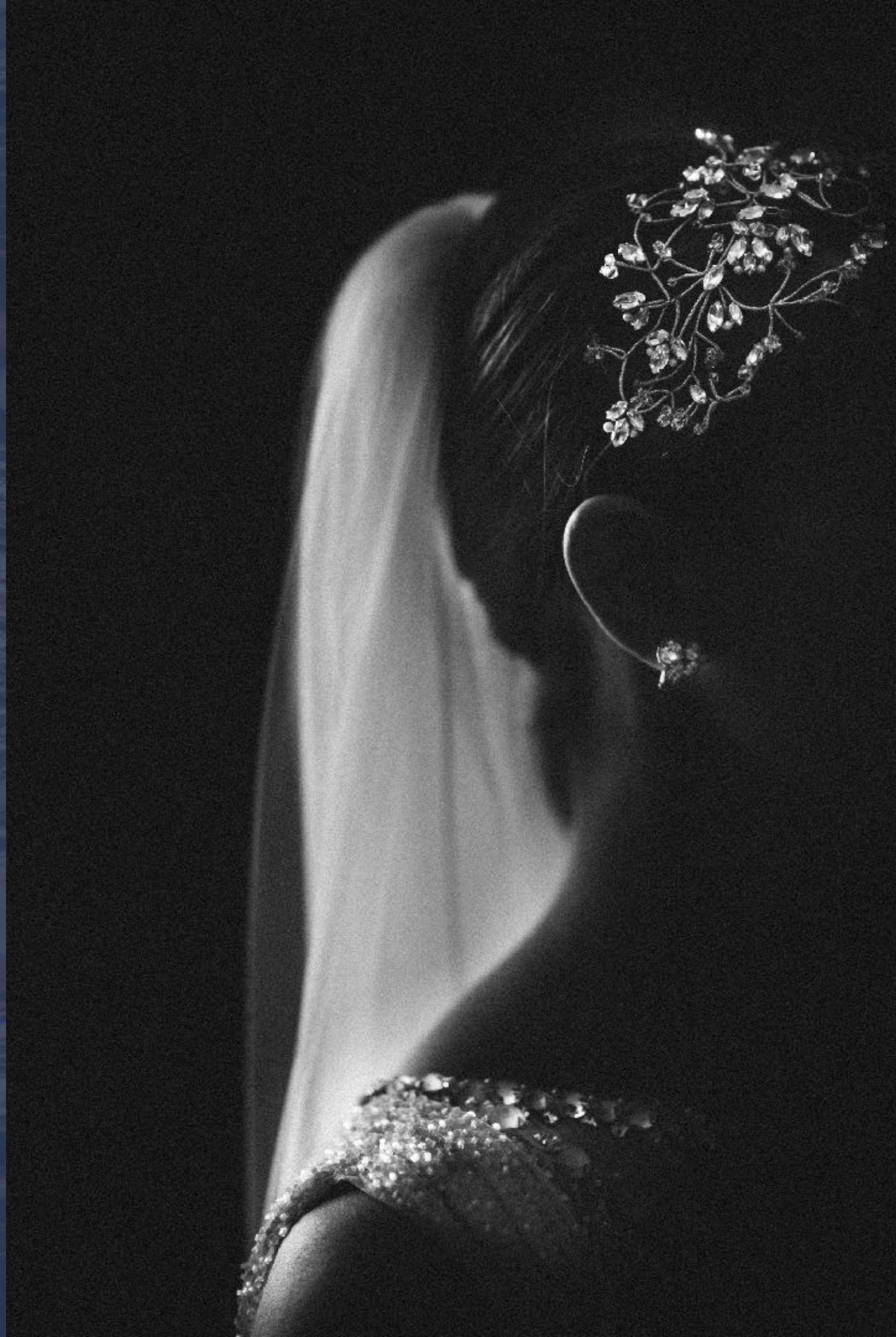


1/160...f/2.8...ISO 900... 24.0-70.0 mm f/2.8...66 mm...Aperture priority...- 2/3 EV













49 MINUTES FROM THE SECOND I WALKED  
INTO THE CHURCH TO THE SECOND I LEFT

---

# THE CEREMONY





1/125...f/2.8...ISO 10000... 70.0-200.0 mm f/2.8...200 mm...Aperture priority...0 EV







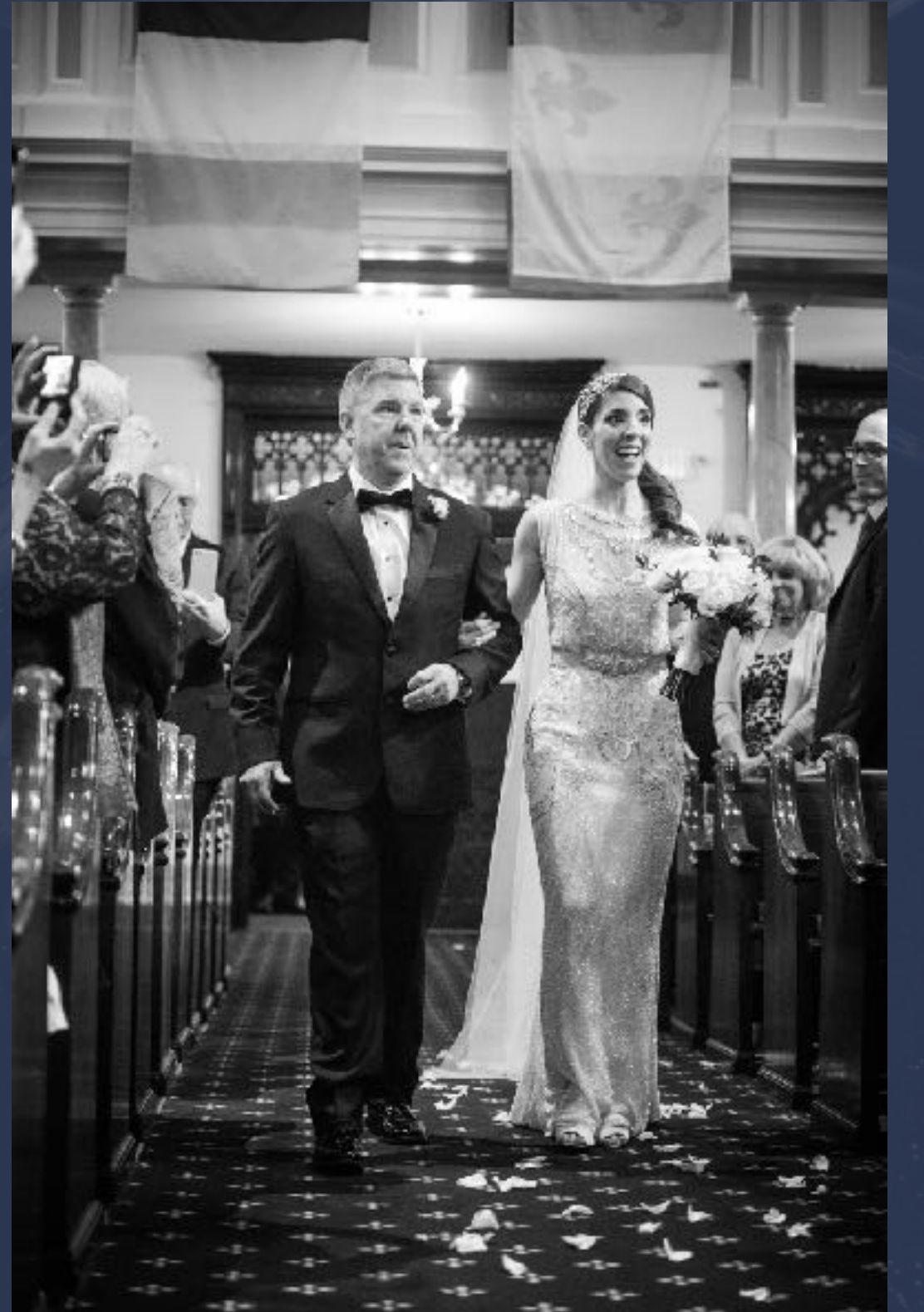


1/320...f/2.8...ISO 10000... 70.0-200.0 mm f/2.8...70 mm...Aperture priority...- 1/3 EV













1/200...f/2.8...ISO 10000... 70.0-200.0 mm f/2.8...70 mm...Aperture priority...0 EV





1/400...f/2.8...ISO 9000... 70.0-200.0 mm f/2.8...165 mm...Aperture priority...- 1 EV





1/400...f/2.8...ISO 5600... 70.0-200.0 mm f/2.8...70 mm...Aperture priority...0 EV





1/160...f/2.8...ISO 4000... 24.0-70.0 mm f/2.8... 24 mm...Aperture priority...+ 1/3 EV





1/400...f/2.8...ISO 2200... 70.0-200.0 mm f/2.8...200 mm...Aperture priority...1/3 EV





1/400...f/2.8...ISO 4000... 70.0-200.0 mm f/2.8...200 mm...Aperture priority...1/3 EV









1/400...f/2.8...ISO 1250... 70.0-200.0 mm f/2.8...200 mm...Aperture priority...- 2/3 EV





1/320...f/2.8...0000... 70.0-200.0 mm f/2.8...200 mm...Aperture priority... 0 EV





1/400...f/2.8...ISO 1250...70.0-200.0 mm f/2.8...200 mm...Aperture priority...- 2 2/3 EV













1/400...f/2.8...ISO 1800... 70.0-200.0 mm f/2.8... 200 mm...Aperture priority...0 EV





1/400...f/2.8...ISO 9000... 70.0-200.0 mm f/2.8...200 mm...Aperture priority...0 EV





1/400...f/2.8...ISO 6400... 70.0-200.0 mm f/2.8...200 mm...Aperture priority...- 1/3 EV









2 HOURS AND 15 MINUTES INCLUDING  
TRAVEL TIME BETWEEN LOCATIONS

---

# PORTRAITS





1/1000...f/2.8...ISO 100...24.0-70.0 mm f/2.8...31 mm...Aperture priority...2 EV





1/400 f/4 ISO 160 70.0-200.0 mm f/4.0 70 mm Aperture priority 1 1/3 EV









1/80...f/5.6...ISO 400... 70.0-200.0 mm f/4.0...140 mm...Manual...0 EV





1/80...f/5.6...ISO 400... 70.0-200.0 mm f/4.0... 160 mm...Manual...0 EV





1/80...f/5.6...ISO 400... 70.0-200.0 mm f/4.0...135 mm...Manual...0 EV





1/80...f/5.6...ISO 400... 70.0-200.0 mm f/4.0...185 mm...Manual...0 EV









1/400...f/4...ISO 110... 70.0-200.0 mm f/4.0...70 mm...Aperture priority...- 2 EV









1/400...f/4...ISO 720... 70.0-200.0 mm f/4.0...125 mm...Aperture priority...1/3 EV





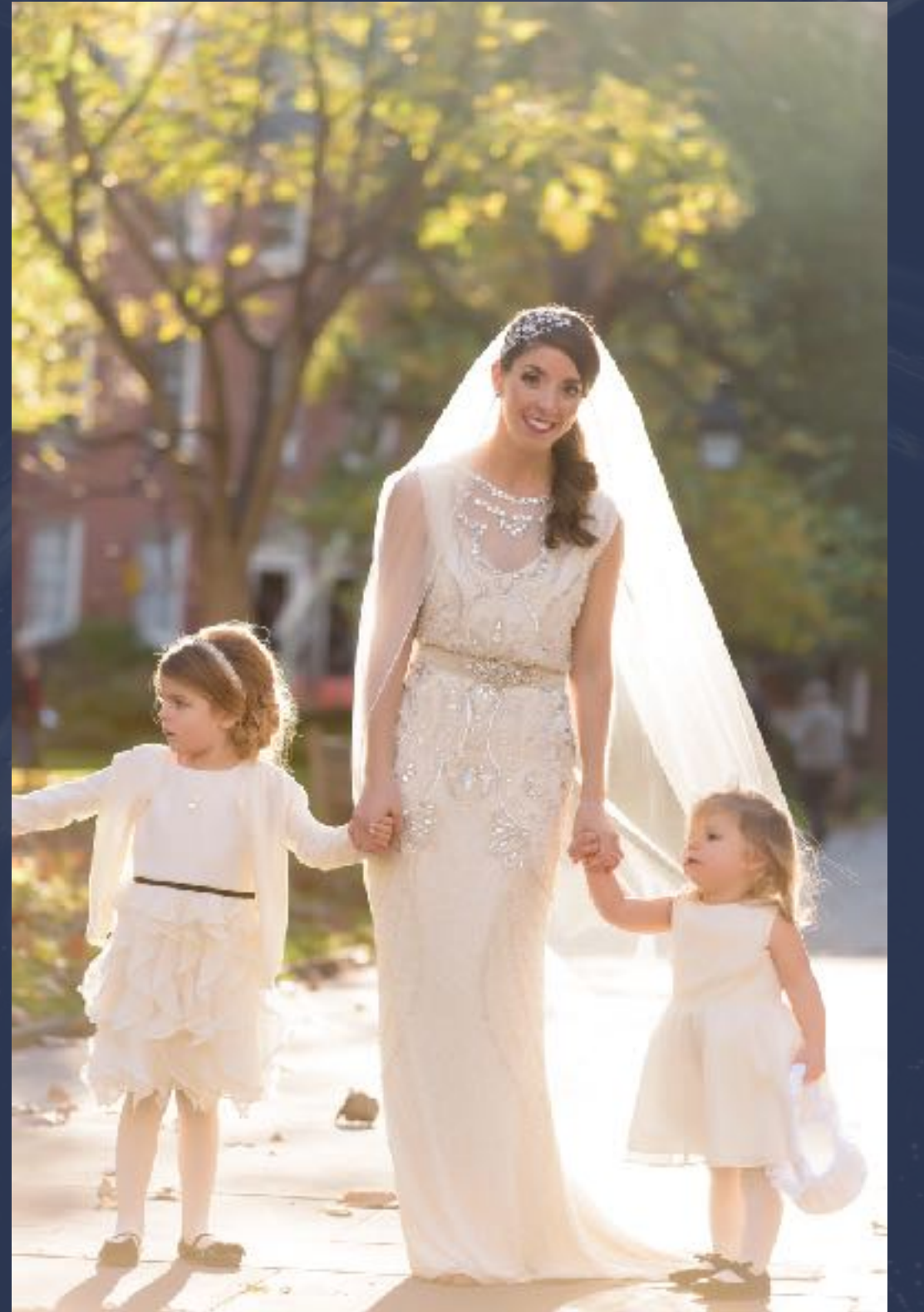
1/400...f/5...ISO 720... 70.0-200.0 mm f/4.0...200 mm...Aperture priority...1 1/3 EV





1/400...f/5...ISO 900... 70.0-200.0 mm f/4.0...175 mm...Aperture priority... $\frac{2}{3}$ ? EV







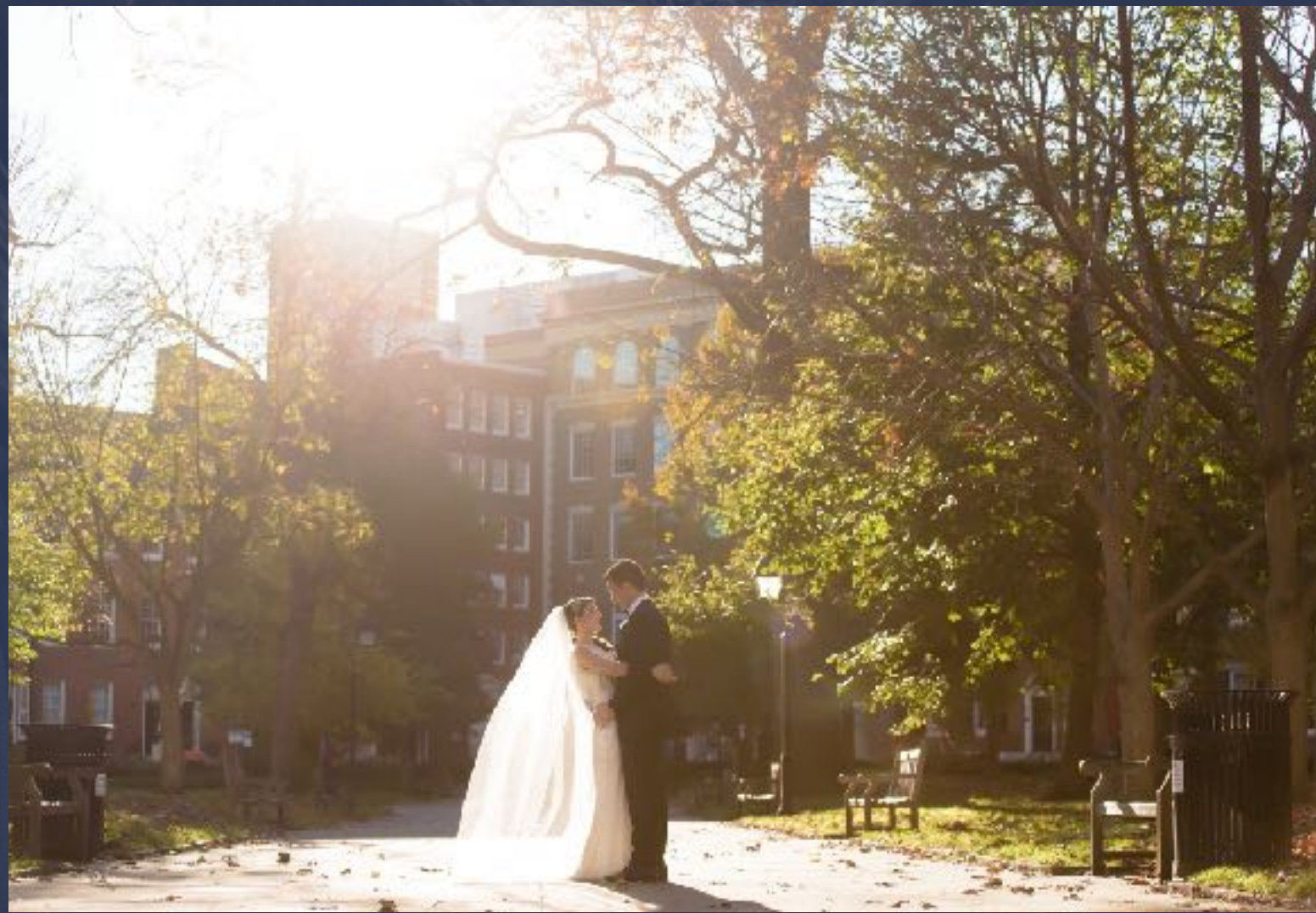






1/500...1/4...ISO 100...70.0-200.0 mm f/4.0...200 mm...Aperture priority...1/3 EV









1/400...f/4...ISO 320... 70.0-200.0 mm f/4.0...200 mm...Aperture priority...0 EV





1/400...f/4...ISO 800... 70-200.0 mm f/4.0...200 mm...Aperture priority...1 2/3 EV





1/400...f/4...ISO 250... 70.0-200.0 mm f/4.0...200 mm...Aperture priority... 1 EV









1/3200...f/4...ISO 100... 70.0-200.0 mm f/4.0...200 mm...Aperture priority... $\frac{2}{3}$ ? EV









1/640...f/4...ISO 100... 70.0-200.0 mm f/4.0...150 mm...Aperture priority...0 EV





1/4000...f/2.8...ISO 100... 24.0-70.0 mm f/2.8...45 mm...Aperture priority...- 1 EV





1/4000...f/2.8...ISO 100... 24.0-70.0 mm f/2.8...52 mm...Aperture priority...- 1 EV









1/2500...f/2.8...ISO 100... 24.0-70.0 mm f/2.8...24 mm...Aperture priority...0 EV









1/400...f/4...ISO 140... 70.0-200.0 mm f/4.0...70 mm...Aperture priority...- 1/3 EV



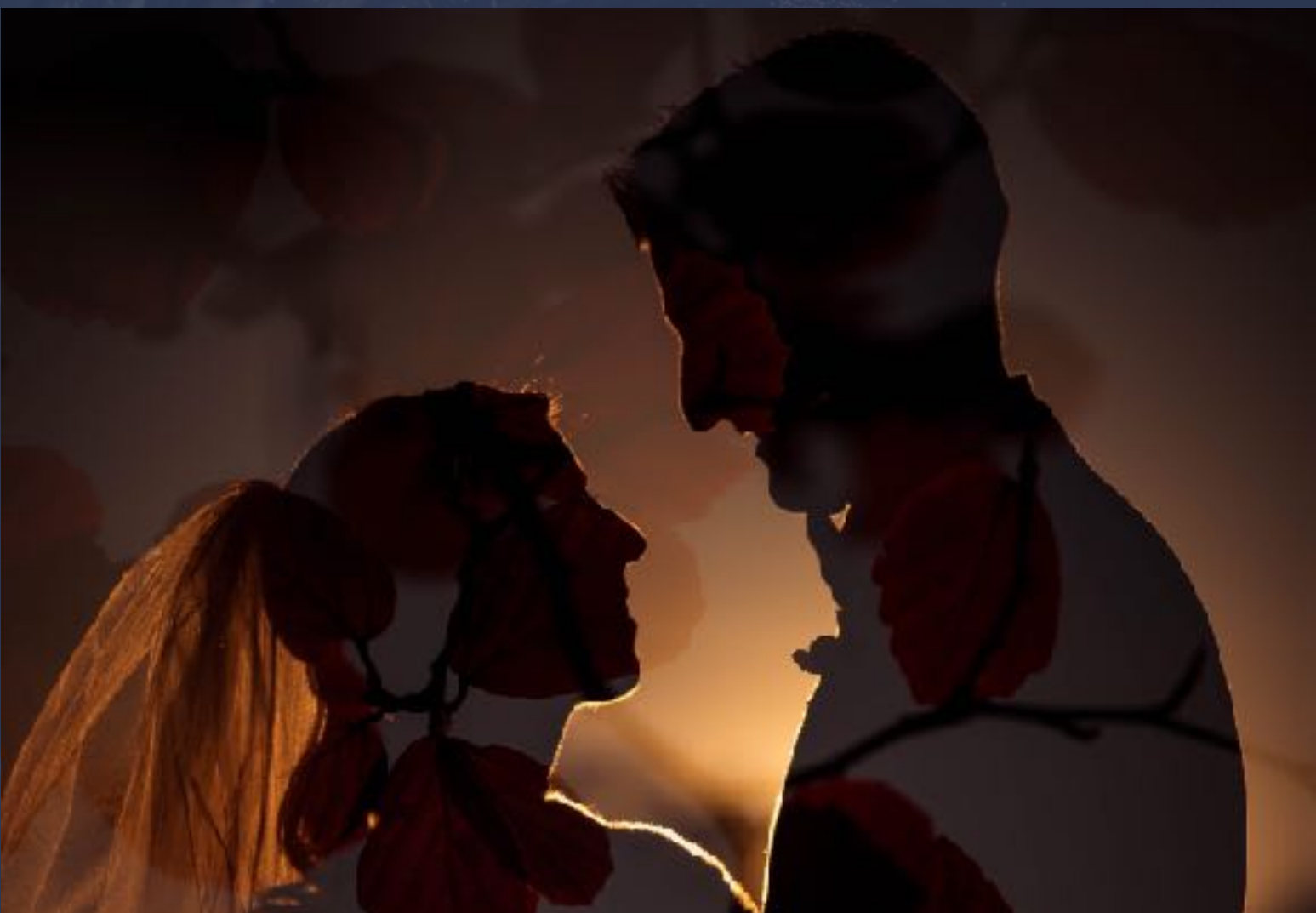






1/4000...f/4...ISO 100... 70.0-200.0 mm f/4.0...150 mm...Aperture priority...- 2 1/3 EV









ISO 160... 70.0-200.0 mm f/4.0...200 mm...Aperture





33 MINUTES

---

# COCKTAIL HOUR AND RECEPTION DETAILS





1/60...f/5.6...ISO 3200... 24.0-70.0 mm f/2.8...27 mm...Manual...0 EV

















1/400...f/4...ISO 9000... 70.0-200.0 mm f/4.0...112 mm...Aperture priority...1 2/3 EV





1/320...f/4...ISO 10000... 70.0-200.0 mm f/4.0...200 mm...Aperture priority...0 EV





1/250...f/4...ISO 10000... 70.0-200.0 mm f/4.0...200 mm...Aperture priority... $\frac{2}{3}$ ? EV





1/160...f/4...ISO 10000... 70.0-200.0 mm f/4.0...200 mm...Aperture priority...- 1/3 EV





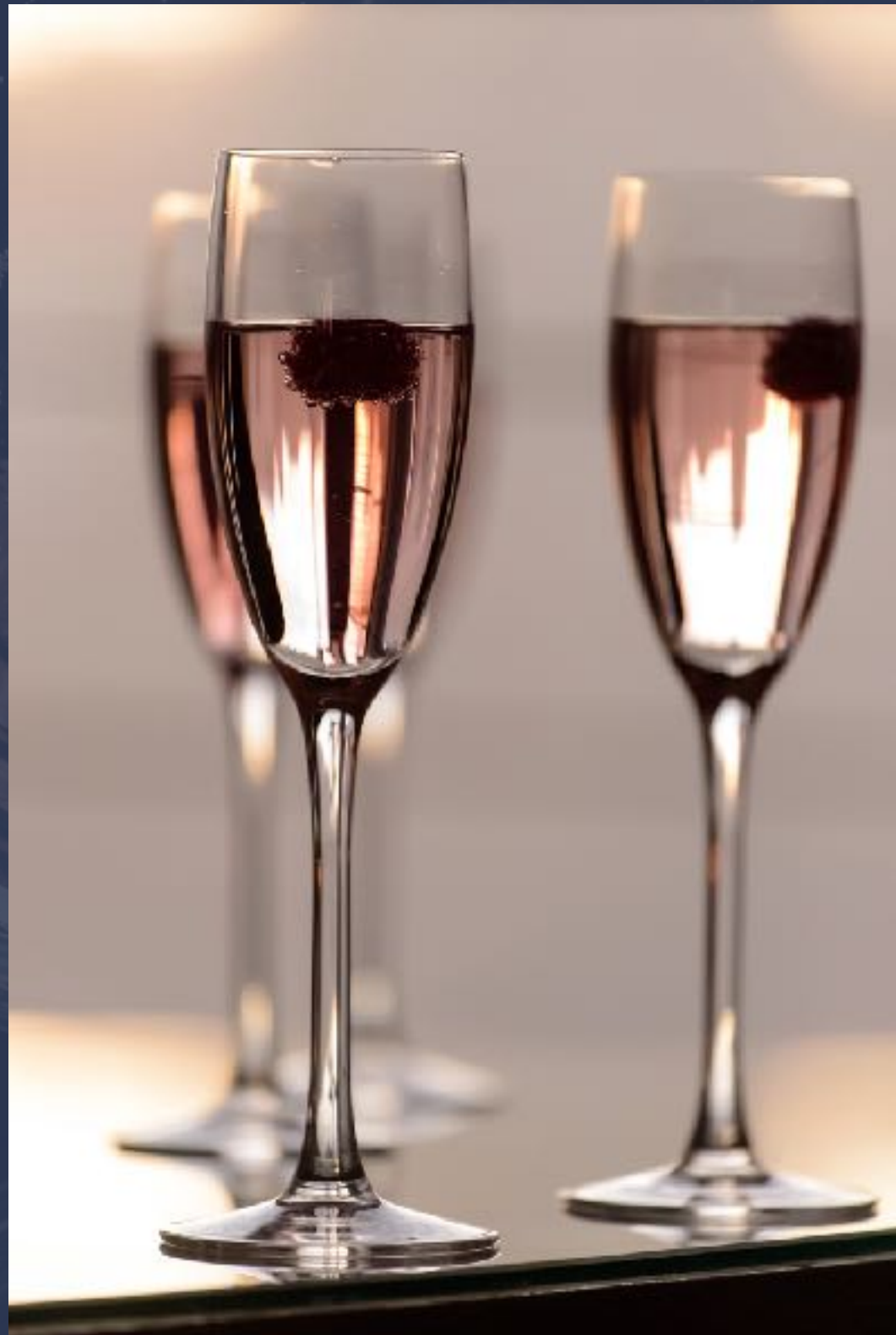
1/320...f/4...ISO 10000... 16.0-35.0 mm f/4.0...16 mm...Aperture priority...- 2/3 EV





1/250...f/4...ISO 10000... 16.0-35.0 mm f/4.0...16 mm...Aperture priority...- 1 EV









2 HOURS AND 14 MINUTES

---

# THE RECEPTION





1/60...f/4...ISO 1600... 24.0-70.0 mm f/2.8...48 mm...Manual...0 EV





1/60...f/4...ISO 1600... 24.0-70.0 mm f/2.8...52 mm...Manual...0 EV



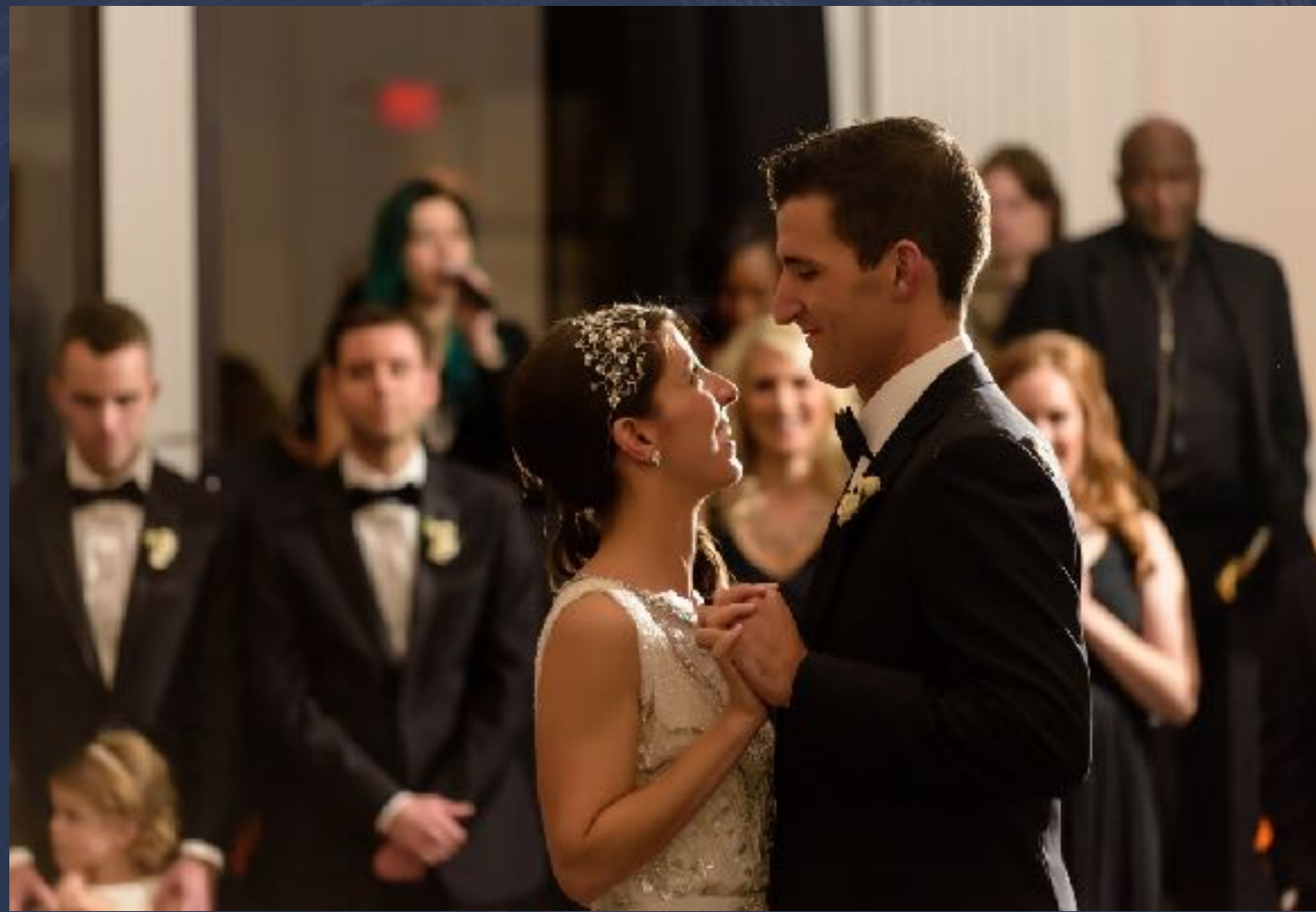






1/60...f/4...ISO 1600... 24.0-70.0 mm f/2.8...36 mm...Manual...0 EV









1/60...f/4...ISO 2000... 70.0-200.0 mm f/4.0...190 mm...Manual...0 EV





1/50...f/3.2...ISO 1600... 24.0-70.0 mm f/2.8... mm...Manual .0 EV





1/50...f/4...ISO 1600... 28.0 mm f/2.8...28 mm...Manual...0 EV









1/60...f/4...ISO 2000... 70.0-200.0 mm f/4.0...145 mm...Manual...0 EV





1/60...f/4...ISO 2000... 70.0-200.0 mm f/4.0...112 mm...Manual...0 EV





1/60...f/4...ISO 1600...70.0-200.0 mm f/4.0...200 mm...Manual...0 EV





1/60...f/4...ISO 1600... 70.0-200.0 mm f/4.0...200 mm...Manual...0 EV









1/60...f/4...ISO 1600... 70.0-200.0 mm f/4.0...160 mm...Manual...0 EV





1/60...f/4...ISO 1600...70.0-200.0 mm f/4.0...135 mm...Manual...0 EV









1/50...f/4...ISO 1600... 28.0 mm f/2.8...28 mm...Manual...0 EV









1/50...f/3.2...ISO 2500... 28.0 mm f/2.8...28 mm...Manual...0 EV









SUSAN STRIPLING