



THE
WEDDING SCHOOL
CREATING BEAUTY ANYWHERE



WHAT DO YOU NEED?

- ▶ Nothing I do is by chance, or by luck
- ▶ Moments can be a lucky capture, but the other elements have to be in place for the image to really have impact
- ▶ How long does this take to learn?
- ▶ Why are your weddings so much better than mine?
- ▶ Spoiler alert : THEY AREN'T!

LIGHT







COMPELLING BACKGROUND









CAREFUL COMPOSITION









THE RIGHT EQUIPMENT



THE ESSENTIALS

- ▶ Details : 105mm Macro
- ▶ Beautiful backgrounds : 85mm f/1.4
- ▶ Wider angles : 24-70mm f/2.8, 35mm, 28mm
- ▶ Compressed backgrounds : 70-200mm f/2.8 or f/4.0
- ▶ I've been a Nikon shooter since 2007
- ▶ Thus, everything I recommend will be Nikon



105mm macro





85mm f/1.4



85mm f/1.4

24-70mm at 24mm





24-70mm at 24mm

70-200mm at 200mm



GESTURE AND MOMENT



YOU CAN'T FAKE THIS

- ▶ This is what will really set you apart
- ▶ Staging it will never make it look real
- ▶ You can set the scene for a moment to happen, but you have to allow it to develop organically
- ▶ I never fake moments. I'll stage portraits, but I won't fake moments!
- ▶ It's important to convey that distinction to your clients. Manage those expectations!























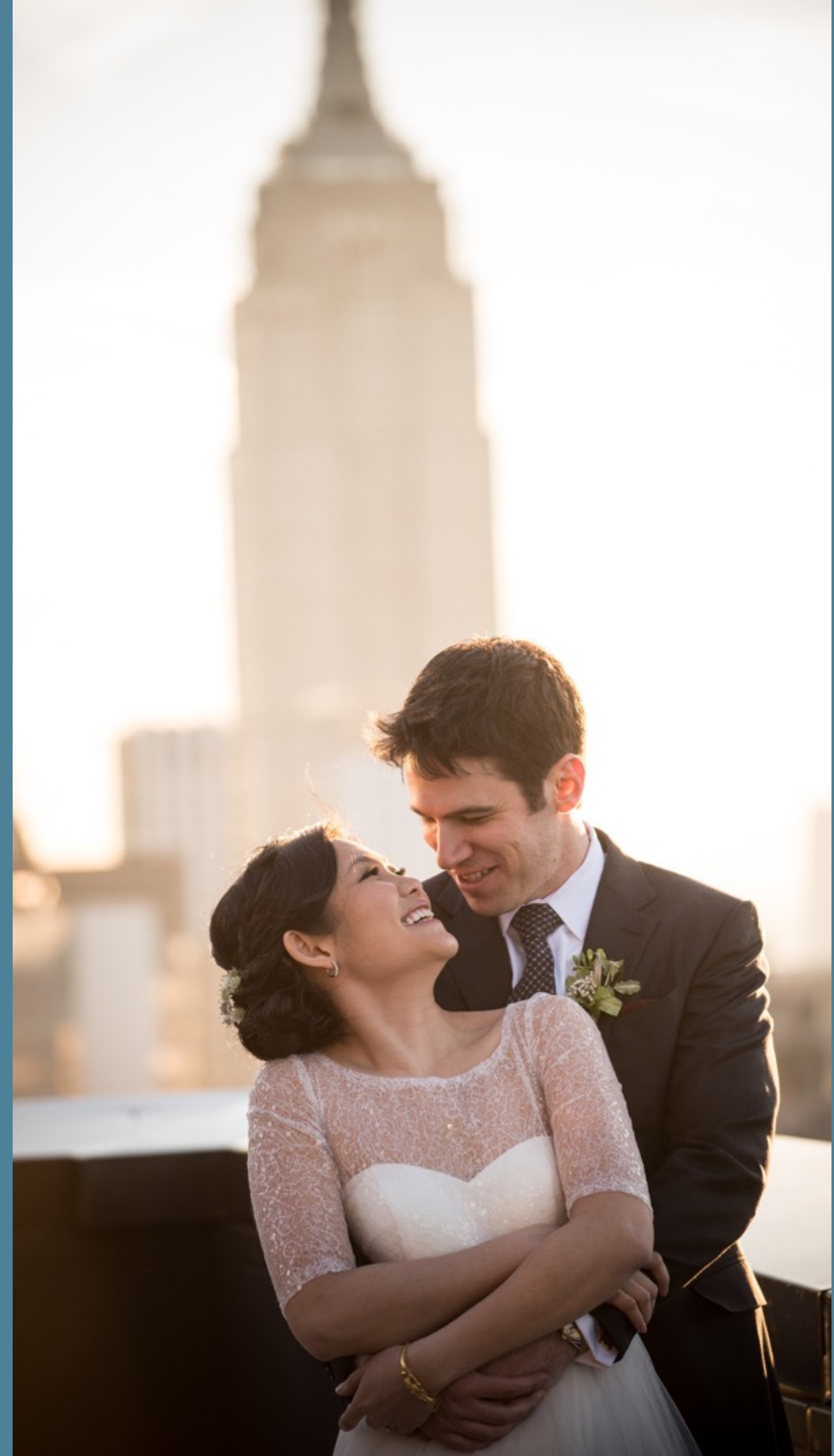


HOW TO PUT IT ALL TOGETHER



A FEW EASY STEPS

- ▶ Find your light source first
- ▶ Choose your background wisely
- ▶ Compose with storytelling in mind
- ▶ Choose the correct lens to tell the story
- ▶ Wait for the moment to develop
- ▶ Sometimes it works, sometimes it doesn't
- ▶ Not every shot is a winner!



CLIENT LIKES OVER INSTAGRAM LIKES



KEEP IT SIMPLE





**GEAR ACTUALLY
DOES MATTER**



THE CRAFT MATTERS

YOUR SETTINGS MATTER

- ▶ Wide angle, macro, or zoom lens? Why?
- ▶ What shutter speed? Why?
- ▶ What f-stop? Why?
- ▶ Flash or natural light? Why?
- ▶ What story are you trying to tell?
- ▶ What emotion are you trying to convey?
- ▶ Is the scene part of the scene?



LENS

SHUTTER
SPEED

F-STOP

LIGHT



105mm macro

LENS

SHUTTER
SPEED

F-STOP

LIGHT



LENS

1/80 sec

SHUTTER
SPEED

F-STOP

LIGHT



LENS

SHUTTER
SPEED

LIGHT

f/11

F-STOP



LENS

SHUTTER
SPEED

F-STOP

window light

LIGHT



LENS

SHUTTER
SPEED

F-STOP

LIGHT



105mm macro

LENS

SHUTTER
SPEED

F-STOP

LIGHT



LENS

1/80 sec

SHUTTER
SPEED

F-STOP

LIGHT



LENS

SHUTTER
SPEED

LIGHT

f/4.5

F-STOP



LENS

SHUTTER
SPEED

F-STOP

direct window light

LIGHT



LENS

SHUTTER
SPEED

F-STOP

LIGHT



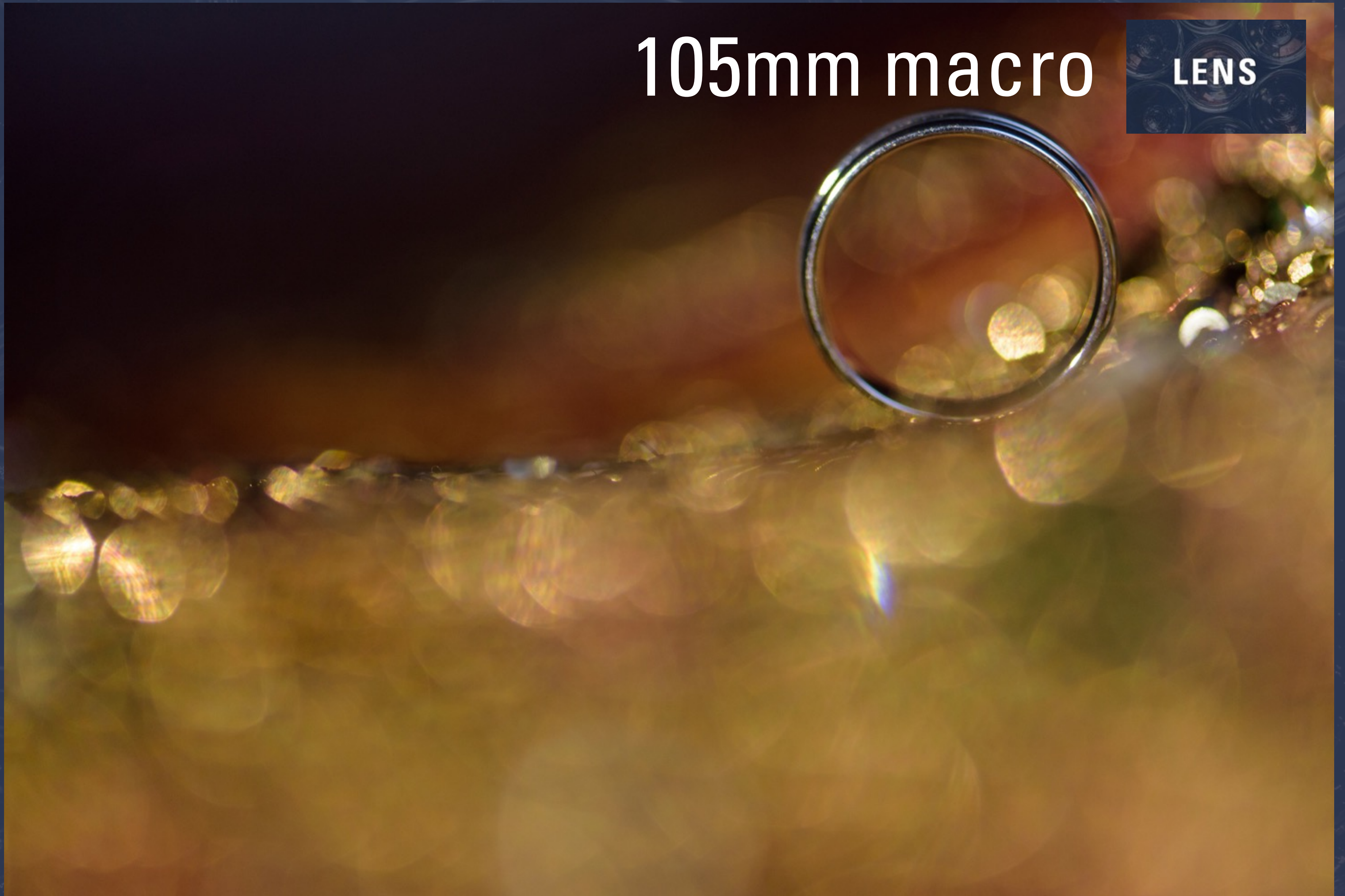
105mm macro

LENS

SHUTTER
SPEED

F-STOP

LIGHT



LENS

1/80 sec

SHUTTER
SPEED

F-STOP

LIGHT



LENS

SHUTTER
SPEED

LIGHT

f/9

F-STOP



LENS

SHUTTER
SPEED

F-STOP

bedside table lamp

LIGHT



CHANGE TO 85MM
F/1.4

LENS

SHUTTER
SPEED

F-STOP

LIGHT



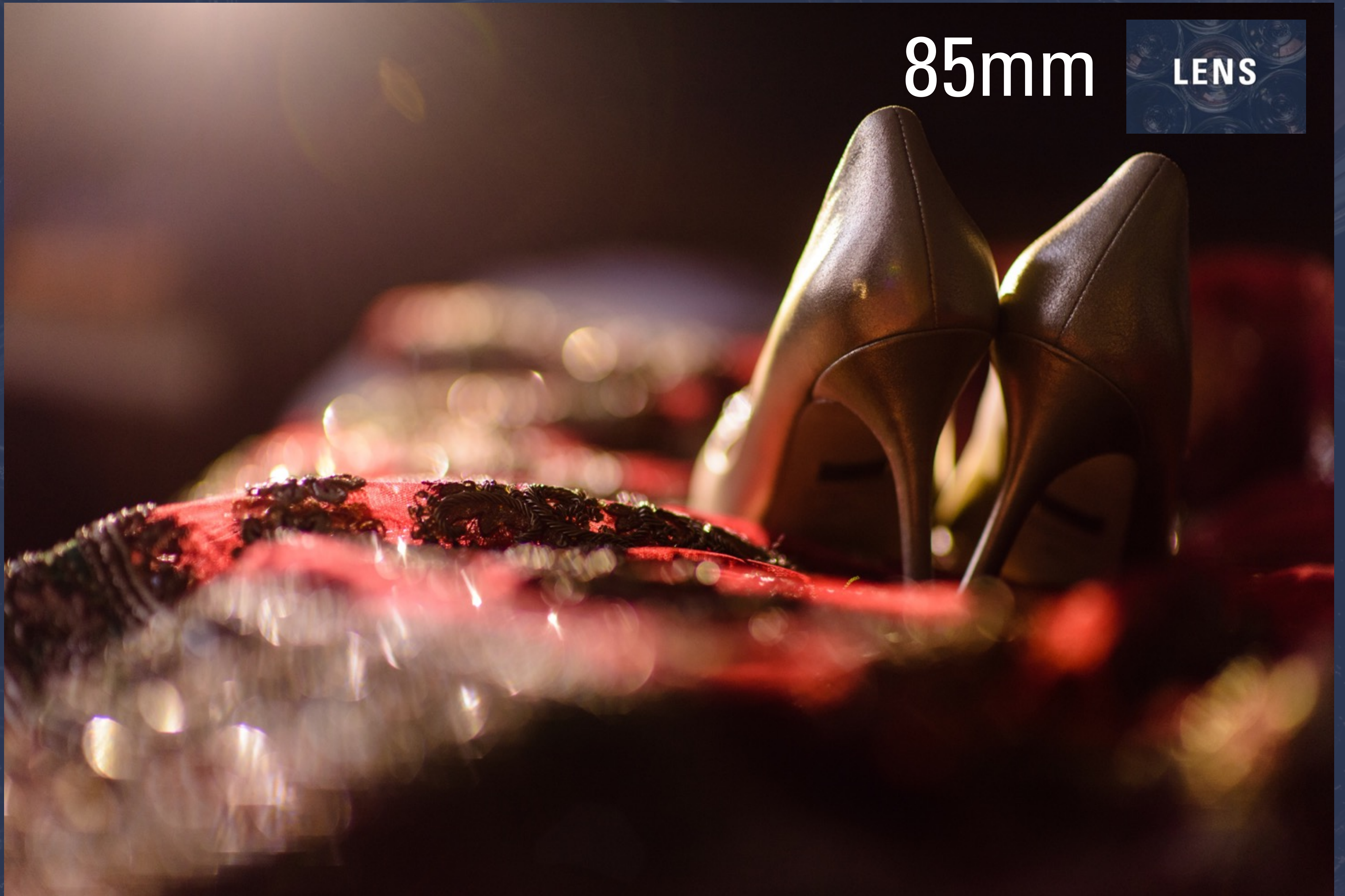
85mm

LENS

SHUTTER
SPEED

F-STOP

LIGHT



LENS

1/80 sec

SHUTTER
SPEED

F-STOP

LIGHT



LENS

SHUTTER
SPEED

LIGHT

f/1.4

F-STOP



LENS

SHUTTER
SPEED

F-STOP

bedside table lamp

LIGHT





IS THIS ART?

- ▶ Sometimes
- ▶ Sometimes not
- ▶ Weddings are tricky and unpredictable
- ▶ I'm making the most of difficult situations
- ▶ Trying to find something another photographer wouldn't think to see or shoot
- ▶ Creative a diverse body of work for the CLIENTS

LENS

**SHUTTER
SPEED**

F-STOP

LIGHT



35mm

LENS

SHUTTER
SPEED

F-STOP

LIGHT



LENS

F-STOP

LIGHT

1/160 sec

SHUTTER
SPEED



LENS

SHUTTER
SPEED

LIGHT

f/2.8

F-STOP



LENS

SHUTTER
SPEED

F-STOP

teeny tiny window

LIGHT



LENS

**SHUTTER
SPEED**

F-STOP

LIGHT



24-70mm at 24mm

LENS

SHUTTER
SPEED

F-STOP

LIGHT



LENS

F-STOP

LIGHT

1/160 sec

SHUTTER
SPEED



LENS

SHUTTER
SPEED

LIGHT

f/2.8

F-STOP



LENS

SHUTTER
SPEED

F-STOP

window

LIGHT



LENS

**SHUTTER
SPEED**

F-STOP

LIGHT



70-200mm f/4.0

LENS

SHUTTER
SPEED

F-STOP

LIGHT



LENS

1/400 sec

SHUTTER
SPEED

F-STOP

LIGHT



LENS

f/4.0

F-STOP

SHUTTER
SPEED

LIGHT



LENS

SHUTTER
SPEED

F-STOP

window

LIGHT



LENS

SHUTTER
SPEED

F-STOP

LIGHT



24-70mm at 48mm

LENS

SHUTTER
SPEED

F-STOP

LIGHT



LENS

F-STOP

LIGHT

1/160 sec

SHUTTER
SPEED



LENS

SHUTTER
SPEED

LIGHT

f/2.8

F-STOP



LENS

SHUTTER
SPEED

F-STOP

window

LIGHT



LENS

SHUTTER
SPEED

F-STOP

LIGHT



85mm

LENS

SHUTTER
SPEED

F-STOP

LIGHT



LENS

F-STOP

LIGHT

1/160 sec

SHUTTER
SPEED



LENS

SHUTTER
SPEED

LIGHT

f/1.8

F-STOP



LENS

SHUTTER
SPEED

F-STOP

existing

LIGHT



LENS

SHUTTER
SPEED

F-STOP

LIGHT



85mm

LENS

SHUTTER
SPEED

F-STOP

LIGHT



LENS

F-STOP

LIGHT

1/160 sec

SHUTTER
SPEED



LENS

SHUTTER
SPEED

LIGHT

f/1.4

F-STOP



LENS

SHUTTER
SPEED

F-STOP

existing

LIGHT



LENS

SHUTTER
SPEED

F-STOP

LIGHT



85mm

LENS

SHUTTER
SPEED

F-STOP

LIGHT



LENS

F-STOP

LIGHT

1/160 sec

SHUTTER
SPEED



LENS

SHUTTER
SPEED

LIGHT

f/1.4

F-STOP



LENS

SHUTTER
SPEED

F-STOP

existing

LIGHT



LENS

SHUTTER
SPEED

F-STOP

LIGHT



70-200mm f/2.8

LENS

SHUTTER
SPEED

F-STOP

LIGHT



LENS

F-STOP

LIGHT

1/60 sec

SHUTTER
SPEED



LENS

SHUTTER
SPEED

LIGHT

f/2.8

F-STOP



LENS

SHUTTER
SPEED

F-STOP

off-camera flash at 1/16 power

LIGHT



**WHAT IF YOU'RE
IN A HURRY?**











CAN YOU REPEAT THAT?

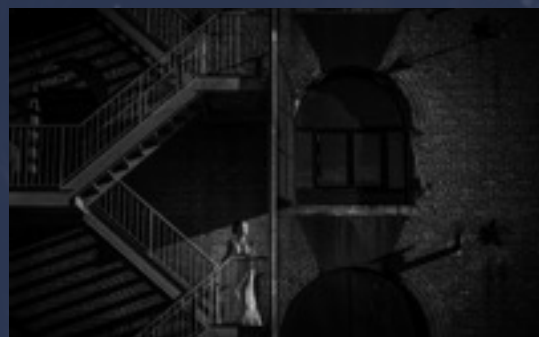
- ▶ Find your light first, and fast
- ▶ Choose your background
- ▶ Keep things simple
- ▶ Decide on your gear
- ▶ Learn your gear inside and out so your choices are immediate and intuitive
- ▶ Let the client lead the gesture

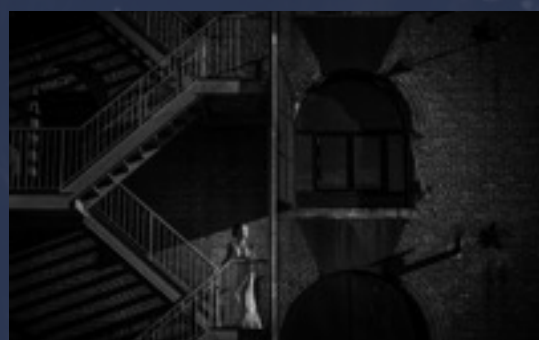
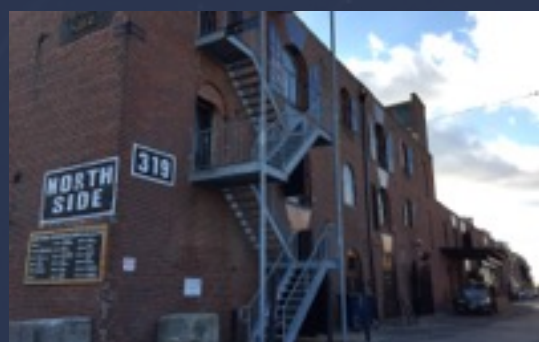
**YEAH, BUT THAT
ROOM WAS PRETTY!**

WHAT IF IT'S BAD?

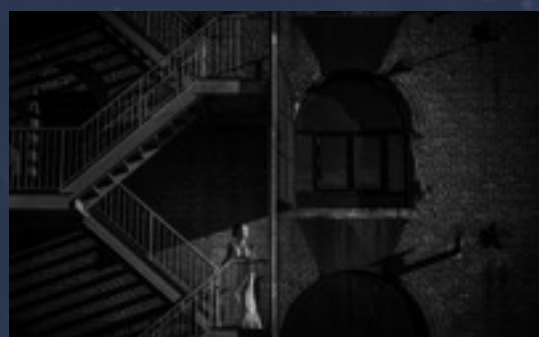
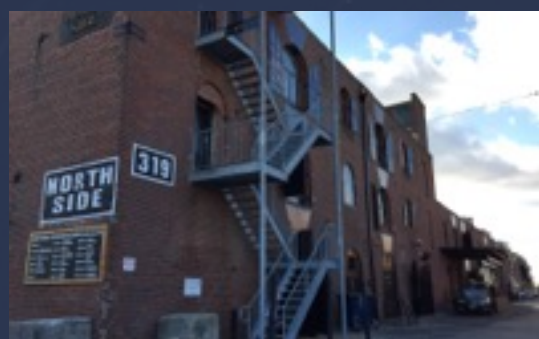
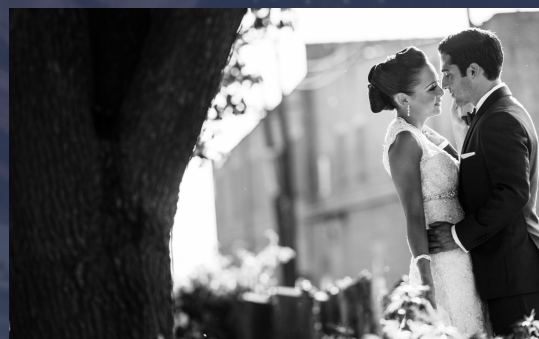
LIKE, REALLY BAD?

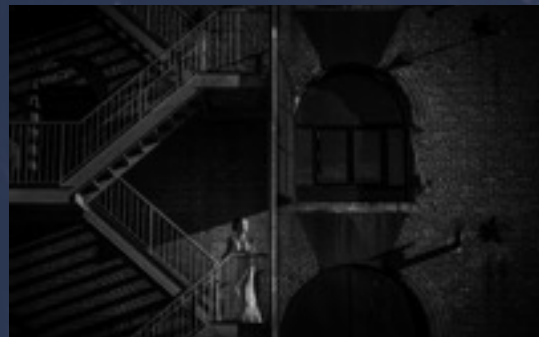
**LIKE A PARKING
LOT?**

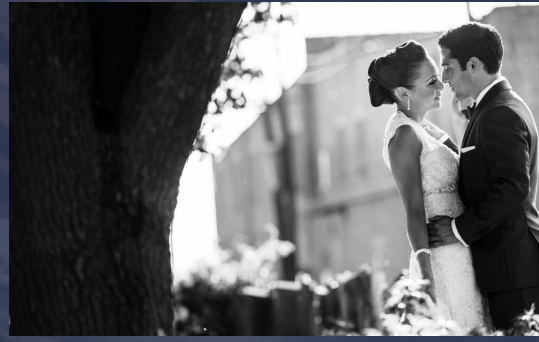


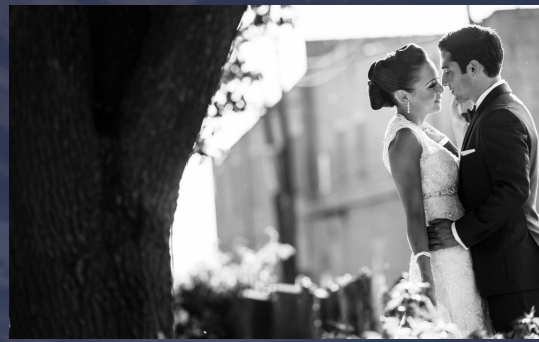












TO RECAP...

**LOOK FOR BEAUTY
EVERYWHERE**



**TRY TO STAY OPEN-
MINDED**



**WE ALL GET IN
RUTS. IT'S OKAY.**



**IT'S A MARATHON.
NOT A SPRINT.**



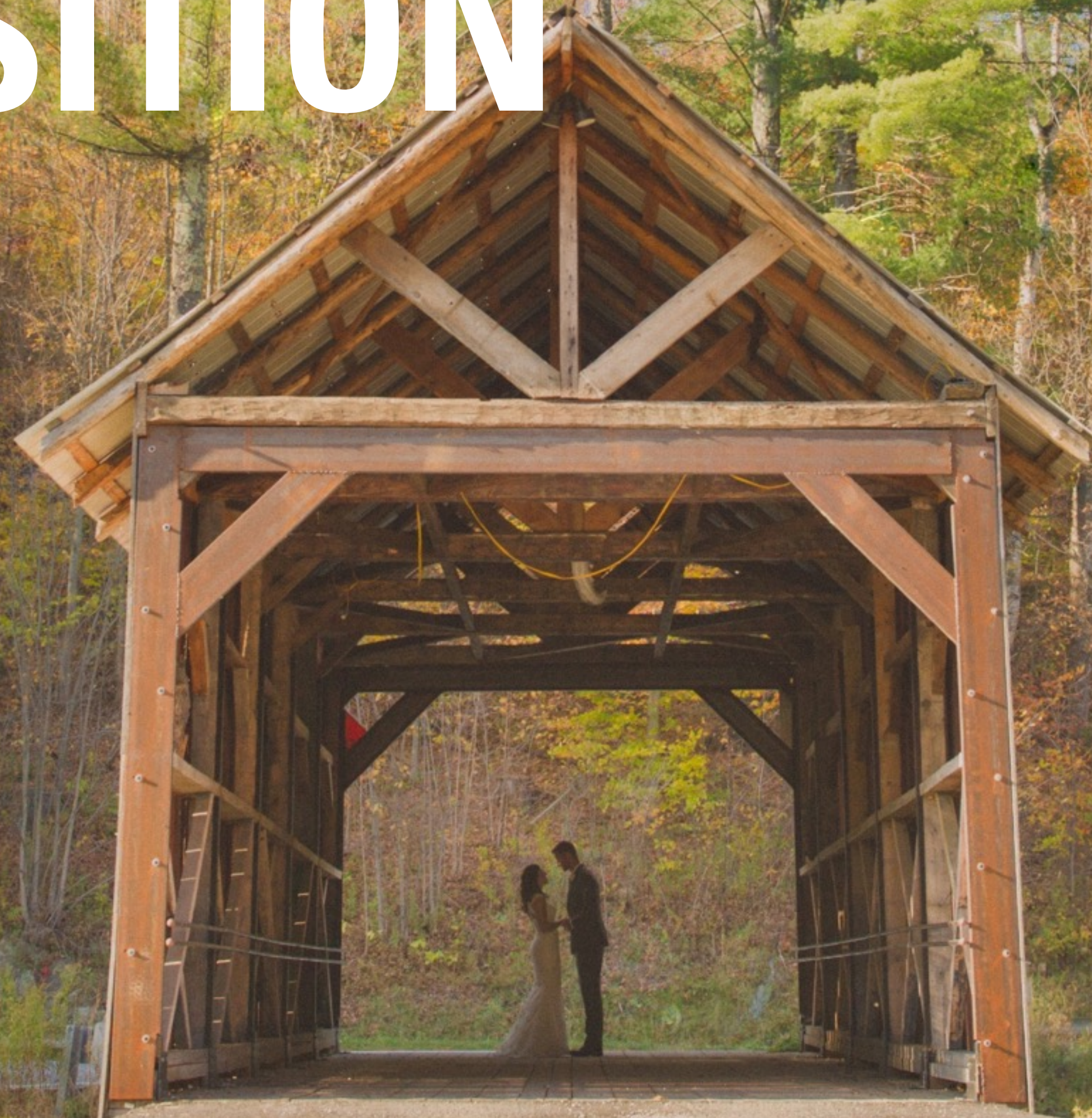


FIND THE LIGHT

**CHOOSE YOUR
BACKGROUND**



DECIDE ON COMPOSITION



CHOOSE YOUR GEAR



WAIT FOR THE MOMENT

























THE
WEDDING SCHOOL